

## 2724ZDR | 声波振动电机 Sonic Motor

应用领域：洗脸刷、脸部按摩仪、保健器材、清洁用具等。

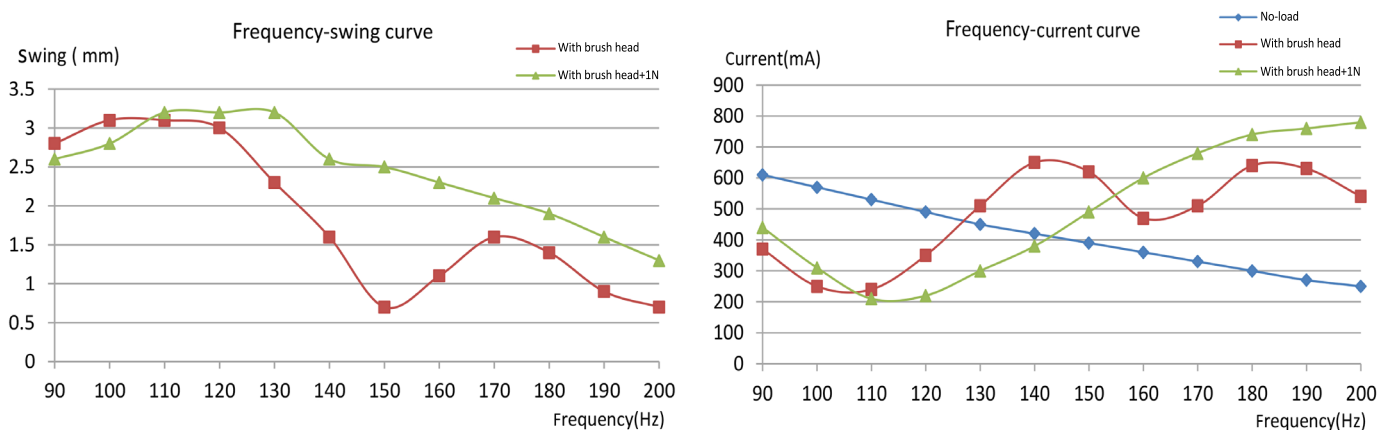
Applications: facial brushes, facial massagers, health care products, cleaning equipment, etc.

### 主要技术指标 | Characteristics

|    |         |                             |                    | -1-L7-30-3.7 |
|----|---------|-----------------------------|--------------------|--------------|
| 1  | 电压      | Voltage                     | V                  | 3.7          |
| 2  | 直流电阻    | Resistance                  | $\Omega$           | 2.1          |
| 3  | 工作频率范围  | Operating frequency range   | Hz                 | 100~220      |
| 4  | 空载振动频次  | No-load vibration frequency | Times / minute     | 26400        |
| 5  | 空载振动电流  | No-load current             | mA                 | 150          |
| 6  | 启动转矩    | Starting torque             | mNm                | 40           |
| 7  | 启动电流    | Starting current            | A                  | 1.8          |
| 8  | 负载 (刷头) | Rated load (Brush head)     | g   mm             | 10   31      |
| 9  | 负载振动频次  | Load vibration frequency    | Times / minute     | 20400        |
| 10 | 负载电流    | Load current                | mA                 | 450          |
| 11 | 转子惯量    | Rotor inertia               | $\text{gcm}^2$     | 1.35         |
| 12 | 重量      | Weight                      | g                  | 76           |
| 13 | 工作温度范围  | Operating temperature range | $^{\circ}\text{C}$ | -10~+60      |

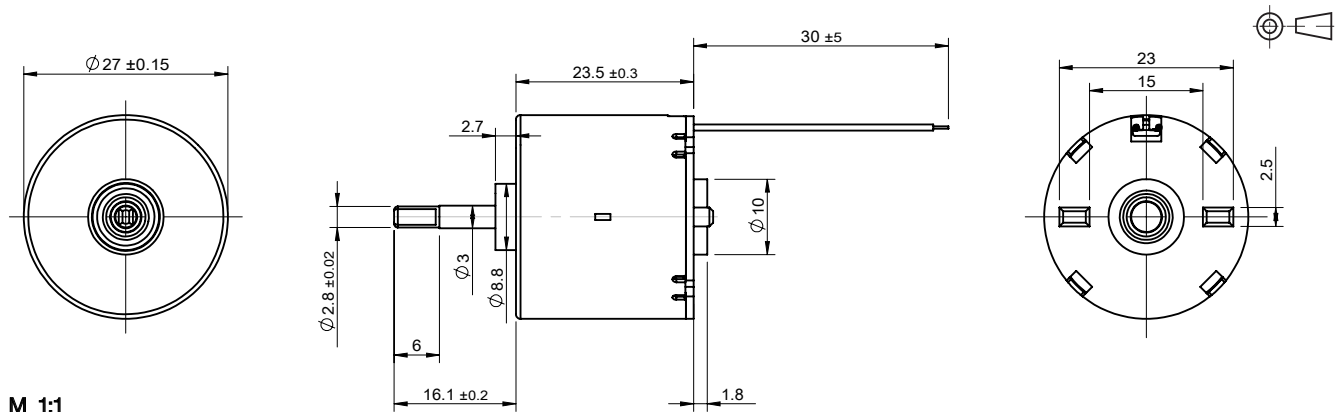
★可选参数 Options: 导线长度 Lead wires length 轴长 Shaft length 性能 Special coils

### 特性曲线 | Characteristics Curve



型号 / Model 2724ZDR-1-L7-30-3.7

### 外观图 | Outline Drawing



M 1:1