

B4040NH2B | 内转子无槽带传感器 Inner Rotor, Slotless, Sensored

应用领域：医疗器械、工业设备等精密驱动领域。

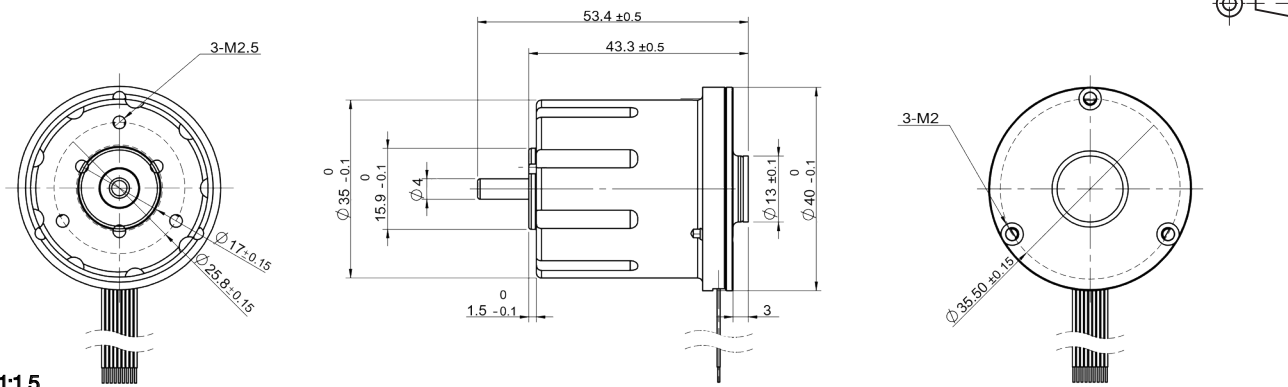
Applications: precision drives in medical equipment, industrial automation fields.

主要技术指标 | Characteristics

			02-420-18.0	
1	电压	Voltage	V	18.0
2	端电阻	Terminal resistance	Ω	1.5
3	空载转速	No-load speed	rpm	42000
4	空载电流	No-load current	A	0.168
5	堵转转矩	Stall torque	mNm	47.7
6	堵转电流	Stall current	A	12
7	额定转矩	Nominal torque	mNm	5
8	额定转速	Nominal speed	rpm	25000
9	额定电流	Nominal current	A	1
10	最大输出功率	Max. output power	W	52.6
11	最大效率	Max. efficiency	%	48.4
12	反电势常数	Back-EMF constant	mV/rpm	0.4
13	转矩常数	Torque constant	mNm/A	4.0
14	KV 值	KV Value	rpm/V	2333.3
15	转速 / 转矩斜率	Speed/torque gradient	rpm/mNm	879.7
16	转子惯量	Rotor inertia	gcm ²	20
17	重量	Weight	g	200
18	热阻 (机壳 - 环境)	Thermal resistance housing-ambient	K/W	9
19	热阻 (线圈 - 机壳)	Thermal resistance winding-housing	K/W	2.4
20	热时常数 (电机)	Thermal time constant motor	s	1400
21	热时常数 (线圈)	Thermal time constant winding	s	20
22	工作温度范围	Operating temperature range	°C	-40~+120
23	绕组耐温等级	Thermal class of winding	°C	155
24	轴向间隙	Axial play	mm	2.3
25	径向间隙	Radial play	mm	0.012
26	动态轴向载荷	Axial load dynamic	N	8
27	静态轴向载荷	Axial load static	N	110
28	径向载荷 (距安装面 3mm)	Radial load at 3 mm from mounting face	N	31
29	极对数	No. of pole pairs		2
30	轴承	Bearings	2 枚滚动轴承/2 ball bearings	
31	换向结构	Commutation	霍尔传感器/Hall Sensor	
32	防护等级	Protection class	IP 20	

★可选参数 Options: 导线长度 Lead wires length 轴长 Shaft length 性能 Special coils 齿轮箱 Gearheads 轴承类型 Bearing type 霍尔传感器 Hall sensor
编码器 Encoder 驱动器 Driver

外观图 | Outline Drawing



M 1:1.5