

## B7584FBHIE2B | 内转子无槽带内置驱动器 Inner Rotor With Integrated Driver, Slotless

应用领域：医疗器械、工业设备等精密驱动领域。

Applications: precision drives in medical equipment, industrial automation fields.

### 主要技术指标 | Characteristics

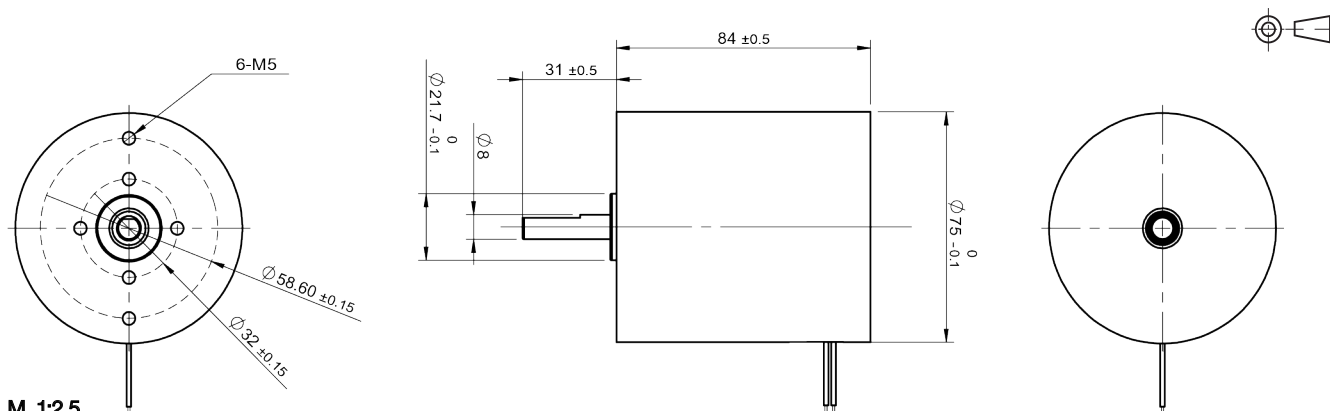
63-24.0-0001

1	电压	Voltage	V	24
2	使用电压范围	Operating Voltage	V	12~26
3	端电阻	Terminal resistance	$\Omega$	N/A
4	空载转速	No-load speed	rpm	6300
5	空载电流	No-load current	A	0.3
6	堵转转矩	Stall torque	mNm	290.4
7	堵转电流	Stall current	A	8.6
8	额定转矩	Nominal torque	mNm	106
9	额定转速	Nominal speed	rpm	4000
10	额定电流	Nominal current	A	3.2
11	最大输出功率	Max. output power	W	49
12	最大效率	Max. efficiency	%	69
13	反电势常数	Back-EMF constant	mV/rpm	3.7
14	转矩常数	Torque constant	mNm/A	35
15	KV 值	KV Value	rpm/V	263
16	转速 / 转矩斜率	Speed/torque gradient	rpm/mNm	22
17	转子惯量	Rotor inertia	gcm <sup>2</sup>	28
18	重量	Weight	g	1160
19	热阻 (机壳 - 环境)	Thermal resistance housing-ambient	K/W	2
20	热阻 (线圈 - 机壳)	Thermal resistance winding-housing	K/W	3
21	热时常数 (电机)	Thermal time constant motor	s	112
22	热时常数 (线圈)	Thermal time constant winding	s	8.9
23	工作温度范围	Operating temperature range	°C	-40~+100
24	绕组耐温等级	Thermal class of winding	°C	130
25	轴向间隙	Axial play	mm	4
26	径向间隙	Radial play	mm	0.3
27	动态轴向载荷	Axial load dynamic	N	10
28	静态轴向载荷	Axial load static	N	300
29	径向载荷 (距安装面 3mm)	Radial load at 3 mm from mounting face	N	215
30	极对数	No. of pole pairs		2
31	轴承	Bearings		2 枚滚动轴承/2 ball bearings
32	换向结构	Commutation		霍尔传感器/Hall Sensor
33	防护等级	Protection class		IP 30

★可选参数 Options: 导线长度 Lead wires length 轴长 Shaft length 性能 Special coils

齿轮箱 Gearheads 轴承类型 Bearing type

### 外观图 | Outline Drawing



规格如有变更，恕不另行通知  
Specification subject to change without notice

© 2020 CONSTAR  
www.constarmotor.com