

1839ZDF | 声波振动电机 Sonic Motor

应用领域：电动牙刷、保健器材、清洁用具等。

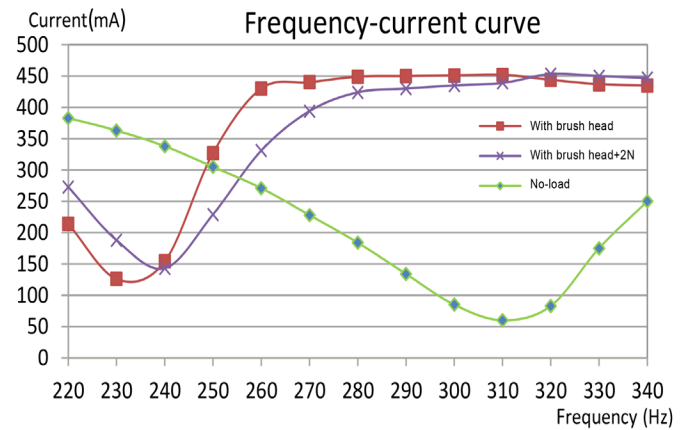
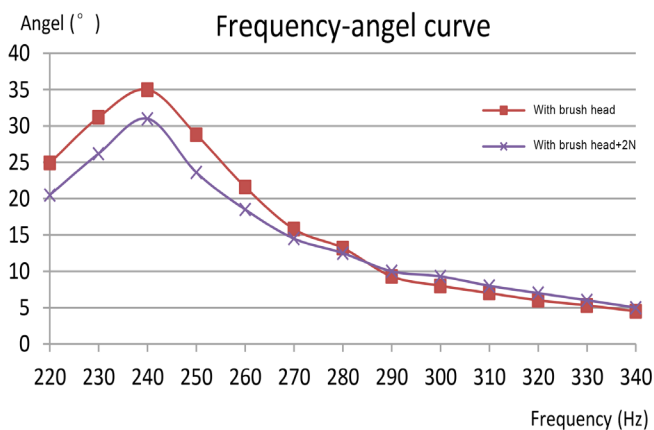
Applications: electric toothbrushes, health care products, cleaning equipment, etc.

主要技术指标 | Characteristics

			-1-L5-3.7	-1AD-L23-40-3.7	-ET-L2-3.7
1	电压	Voltage	V	3.7	3.7
2	直流电阻	Resistance	Ω	3.3	3.7
3	工作频率范围	Operating frequency range	Hz	240~350	220~340
4	空载振动频次	No-load vibration frequency	Times / minute	40000	34800
5	空载振动电流	No-load current	mA	90	75
6	启动转矩	Starting torque	mNm	18	22
7	启动电流	Starting current	A	1.1	1.0
8	负载 (刷头)	Rated load (Brush head)	g	3.8	3.9
9	负载振动频次	Load vibration frequency	Times / minute	33600	31200
10	负载电流	Load current	mA	400	460
11	转子惯量	Rotor inertia	gcm^2	1.7	1.8
12	重量	Weight	g	29	30
13	工作温度范围	Operating temperature range	$^{\circ}\text{C}$	-10~+60	-10~+60

★可选参数 Options: 导线长度 Lead wires length 轴长 Shaft length 性能 Special coils

特性曲线 | Characteristics Curve



型号 / Model 1839ZDF-1-L5-3.7

外观图 | Outline Drawing

